

# Calvin Klein

rug collection

collection	page
Balian	5
Riverstone	12
Northwest	15
Abyss	18
Pretoria	21
Mesa	22
Kathmandu	23
Prairie	25
Lunar	26
Sculptural	27
Linear	28
Halo	29
Moonwalk	30
Vapor	31
Tobiano	34

Calvin Klein rugs present a fresh, clean, and understated style that is authentically Calvin Klein. Simple transitional patterns combine tonal contrast and unexpected color combinations with surface texture, using wool, bamboo, and other natural fibers to provide wonderfully modern rugs that make a statement – strong or subtle. The timeless designs, fine raw materials, and craftsmanship reflect the luxurious and high standards of Calvin Klein.

# Balian

The Calvin Klein Balian Collection uses exciting trompe l'oeil designs to create impressions of depth and dimensionality. These subtle yet vivid area rugs bring energy and personality to any room. Each loom-woven, low-pile rug features sumptuous carved details, finely fringed edges and a silk-like sheen.



CK50 SILGY – silver grey

## CK50

loom woven | viscose, acrylic

5 ft 3 ft x 7 ft 3 in. (1.60m x 2.21m)

8 ft x 10 ft (2.44m x 3.05m)

9 ft x 12 ft (2.74m x 3.66m)

10 ft x 13 ft 2 in. (3.05m x 4.01m)



# Balian



CK51 GRYBK – grey black



# Balian



CK52 GREY



# Balian



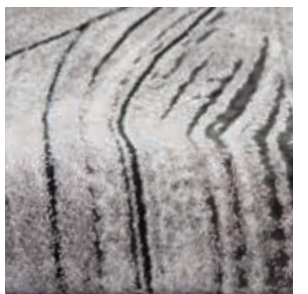
CK54 BLUE



# Balian



CK53 GRYBK – grey black



# Balian



CK55 BKSIL – black/silver



# Balian



CK56 SILBK – silver black



# Riverstone

Calvin Klein minimalist style meets maximalist texture. These area rugs start with wool that is dyed in soft neutrals, and then expertly hand-woven in a large-loop pebble weave.



CK940 GRYIV – pebble grey ivory

**CK940**  
handmade | wool viscose blend  
4 ft x 6 ft (1.22m x 1.83m)  
5 ft 3 in. x 7 ft 5 in. (1.60m x 2.26m)  
8 ft x 10 ft (2.44m x 3.05m)  
9 ft x 12 ft (2.74m x 3.66m)  
10 ft x 14 ft (3.05m x 4.27m)  
custom sizes available

# Riverstone



CK940 IVORY – pebble ivory

# Riverstone



CK940 MOCHA – pebble mocha

# Northwest

The Northwest Collection is inspired by the rugged, rustic beauty of America's northwest. These 100% leather, hair-on-hide area rugs are meticulously crafted with patchwork patterns and cross-stitch details.



CK960 GREY – wyoming grey

**CK960**  
handmade | hair on hide  
5 ft 3 in. x 7 ft 5 in. (1.60m x 2.26m)  
8 ft x 10 ft (2.44m x 3.05m)  
9 ft x 12 ft (2.74m x 3.66m)  
10 ft x 14 ft (3.05m x 4.27m)  
custom sizes available



Northwest



CK960 IVORY – wyoming ivory

Northwest



CK960 BEIGE – wyoming beige

# Abyss

The Calvin Klein Abyss Collection features hand-woven flowing linear patterns, creating subtle, textural variations in the high-low pile. It is soft to the touch, and elevated by a subtle sheen in a wool blend.



CK990 SAND – atlantic sand

## CK990

handmade | wool blend

2 ft x 3 ft (0.61m x 0.91m)  
5 ft 3 in. x 7 ft 3 in. (1.60m x 2.21m)  
8 ft x 10 ft (2.44m x 3.05m)  
9 ft x 12 ft (2.74m x 3.66m)  
10 ft x 14 ft (3.05m x 4.27m)



# Abyss



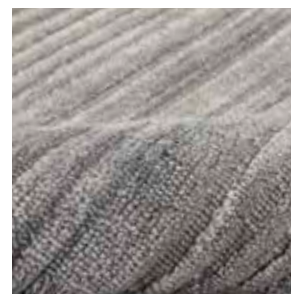
CK990 BLUE – atlantic blue



# Abyss



CK990 SILGY – atlantic silver grey



# Pretoria

Cozy and plush underfoot, Calvin Klein Pretoria rugs feature luxurious wool mohair with rich solid colors in a mosaic pattern to bring simple elegance to any room.



CK890 BLUE – axis blue



CK890 IVORY – axis ivory



CK890 BEIGE – axis beige



CK890 STONE – axis stone

**CK890**  
hand woven | wool & mohair

- 5 ft 6 in. x 8 ft (1.71m x 2.44m)
- 8 ft x 10 ft (2.44m x 3.05m)
- 9 ft x 12 ft (2.74m x 3.66m)
- 10 ft x 14 ft (3.05m x 4.27m)
- 1 ft 6 in. x 6 ft bkt (0.46m x 1.83m)

# Mesa

A mix of eco-friendly fibers creates a textured aesthetic. This handwoven collection features hand-dyed yarns in clean, neutral tones. Fabricated from a blend of jute and bamboo fiber in a cut-and-loop pile, this collection offers a level of simplicity that reinforces the timeless, understated modern design of Calvin Klein Home.



MSA01 HEMAT – indus hematite



MSA01 AMBER – indus amber



MSA01 BARIT – indus barite



MSA01 FOSSI – indus fossil



MSA01 GYPSM – indus gypsum

## CK33

tibetan hand knotted | jute & bamboo blend

- 2 ft 3 in. x 7 ft 5 in. (0.69m x 2.26m)
- 4 ft x 6 ft (1.22m x 1.83m)
- 5 ft 6 in. x 7 ft 5 in. (1.68m x 2.26m)
- 8 ft x 10 ft (2.44m x 3.05m)
- 9 ft x 12 ft (2.74m x 3.66m)
- 10 ft x 14 ft (3.05m x 4.27m)
- custom sizes available

# Kathmandu

Textured, Tibetan hand-knotted Calvin Klein Kathmandu rugs in neutral color palettes invite the outdoors into your home.



CK920 NATRL – moraine natural

## CK920

tibetan hand knotted | wool & jute blend

- 2 ft 3 in. x 7 ft 5 in. (0.69m x 2.28m)
- 4 ft x 6 ft (1.22m x 1.83m)
- 5 ft 6 in. x 7 ft 5 in. (1.71m x 2.28m)
- 8 ft x 10 ft (2.44m x 3.04m)
- 9 ft x 12 ft (2.74m x 3.65m)
- 10 ft x 14 ft (3.04m x 4.26m)
- custom sizes available



# Kathmandu



CK920 GREY – moraine grey



# Prairie

This collection of special skin rugs brings the beauty of nature inside. The cowhides' contrasting hues and alternating hair direction add to the design and sophistication of this unique all natural collection.



PRA1 SIL – arctic silver

## CK17

handmade | hair on hide  
4 ft x 6 ft (1.22m x 1.83m)  
5 ft 6 in. x 7 ft 5 in. (1.68m x 2.26m)  
8 ft x 10 ft (2.44m x 3.05m)  
9 ft x 12 ft (2.74m x 3.66m)  
10 ft x 14 ft (3.05m x 4.27m)  
custom sizes available



PRA1 BGE – palomino beige



PRA1 AMB – suffolk amber



PRA1 SAB – breton sable



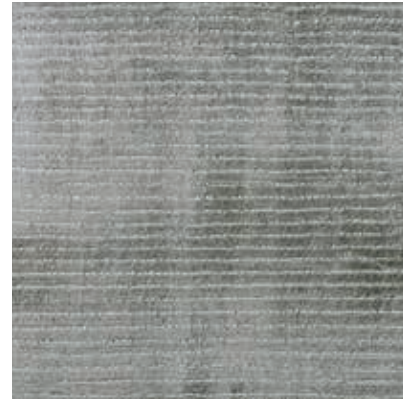
PRA1 BLK – stallion black

# Lunar

This collection of hand loomed rugs evokes luminescent radiance. Silk like fibers offer a subtle sheen in a velvet-like textural quality. Natural tones express the understated modern elegance of Calvin Klein area rugs.



LUNI KLNBL – luminescent rib klein blue



LUNI PEWTR – luminescent rib pewter



LUNI BGE – luminescent rib shell



LUNI PLT – luminescent rib mercury

## CK18

hand loomed | viscose

2 ft 3 in. x 7 ft 5 in. (0.69m x 2.26m)

3 ft 6 in. x 5 ft 6 in. (1.07m x 1.68m)

5 ft 6 in. x 7 ft 5 in. (1.68m x 2.26m)

7 ft 9 in. x 10 ft 10 in. (2.36m x 3.30m)

9 ft 6 in. x 13 ft (2.90m x 3.96m)

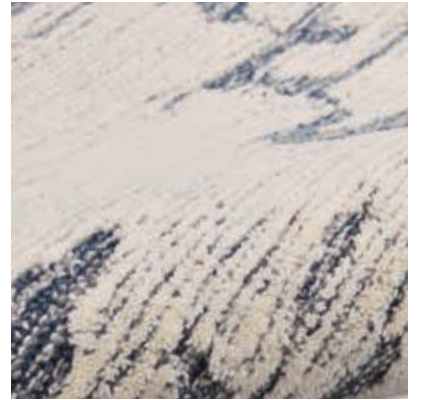
custom sizes available

# Sculptural

Reflecting the simple beauty of natural landscapes, the Calvin Klein Sculptural Area Rug Collection invites a sense of calm. With abstract patterns and high-low textures in space-dyed, neutral colors, each design creates harmony within your living room, bedroom, and home office.



SCL01 GREY



SCL01 BLUE



SCL01 IVORY



SCL01 TEAL

## CK009

hand tufted cut & loop | wool

5 ft 3 in. x 7 ft 3 in. (1.71m x 2.28m)

7 ft 9 in. x 9 ft 9 in. (2.44m x 3.04m)

8 ft 6 in. x 11 ft 6 in. (2.44m x 3.04m)

# Linear

Simple and refined. The Calvin Klein Linear Rug Collection elevates casual style through its fusion of intricately cut and looped textures that create high-low dimension in neutral tones, and highlighted with shimmering accents. Handmade from a premium blend of wool and Luxcelle.



LNR01 GREY



LNR01 IVORY



LNR01 LTBLU - light blue



LNR01 BLUE

## CK010

hand tufted | wool & luxcelle™

- 2 ft 3 in. x 8 ft (0.69m x 2.44m)
- 3 ft 9 in. x 5 ft 9 in. (1.14m x 1.75m)
- 5 ft 3 in. x 7 ft 3 in. (1.60m x 2.21m)
- 7 ft 9 in. x 9 ft 9 in. (2.36m x 2.97m)
- 8 ft 6 in. x 11 ft 6 in. (2.59m x 3.51m)
- 9 ft 9 in. x 13 ft 9 in. (2.36m x 4.19m)

# Halo

Natural, calming and modern. The Calvin Klein Halo Collection brings a grounded feeling to the contemporary home. Each rug is handmade of space-dyed wool yarns in cool neutral tones. These low-profile, minimalist rugs add an effortlessly polished touch in any space.



HAL01 DENIM



HAL01 BEIGE



HAL01 GREY



HAL01 IVORY



HAL01 CHARC - charcoal

## CK400

hand-loomed | wool

- 4 ft x 6 ft (1.22m x 1.83m)
- 5 ft 3 in. x 7 ft 3 in. (1.60m x 2.21m)
- 8 ft x 10 ft (2.44m x 3.05m)

# Moonwalk

You'll feel like you're walking on air with the super-plush pile of the Moonwalk Collection by Calvin Klein. A modern take on the shag, these borderless, serged-edge area rugs are power-loomed out of easy-care fibers, making them low-shed and quick-to-vacuum. Enjoy a Moonwalk shag rug in any moderate traffic room in your home: living room, dining room, bedroom, family room, home office or other special space.



CK100 SILVR - silver

**CK100**  
powerloomed | polyester  
5 ft 3 in. x 7 ft 3 in. (1.60 m x 2.21 m)  
7 ft 10 in. x 9 ft 10 in. (2.39 m x 3.00 m)

# Vapor

Express your ultra-modern sensibility with the Calvin Klein Vapor Collection. These area rugs will instantly upgrade your favorite room, with exciting, abstract designs, and make the perfect complement for your own eclectic decor. With a palette of stylish neutrals and a medium-height pile, these borderless rugs are soft and inviting. Power-loomed out of modern, easy-care fibers, with a serged edge to complete the minimalist, modern look.



CK971 IVBLK - ivory black

**CK970**  
power-loomed | viscose polyester blend  
2 ft 2 in. x 3 ft 9 in. (0.66 m x 1.14 m)  
2 ft 2 in. x 7 ft 6 in. (0.66 m x 2.29 m)  
5 ft 3 in. x 7 ft 3 in. (1.60 m x 2.21 m)  
7 ft 10 in. x 9 ft 10 in. (2.39 m x 3.00 m)  
9 ft x 12 ft (2.74 m x 3.66 m)





# Vapor



CK972 GRYBL - grey blue



CK972 IVGRY - ivory grey

# Vapor



CK970 GRYIV - grey ivory



# Tobiano

In an array of tranquil neutral tones, the clean and contemporary Tobiano collection from Calvin Klein is hand loomed with a basket weave of tightly woven fibers for a distinctive surface texture that offers a simple and timeless aesthetic ideal for any interior.



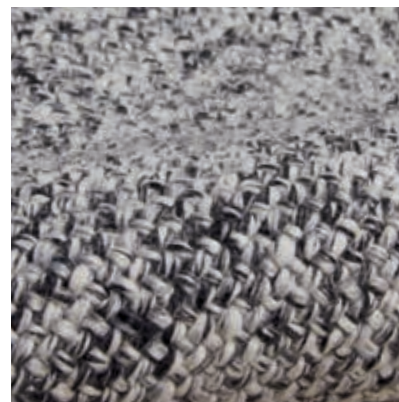
TOB01 SAND – roan sand



TOB01 MICA – roan mica



TOB01 SILVR – roan silver



TOB01 CARBN – roan carbon

## CK39

handmade | polyester blend

4 ft x 6 ft (1.22m x 1.83m)

5 ft 3 in. x 7 ft 5 in. (1.60m x 2.26m)

7 ft 9 in. x 9 ft 10 in. (2.36m x 3.00m)

9 ft x 12 ft (2.74m x 3.66m)

NOURISON USA WORLD HEADQUARTERS • 5 SAMPSON STREET • SADDLE BROOK, NJ 07663  
(201) 368-6900 • FAX (201) 368-0739 • 1-800-223-1110 • E MAIL: CKRUGS@NOURISON.COM • WWW.NOURISON.COM

WORLD MARKET CENTER • 455 S. GRAND CENTRAL PARKWAY, BUILDING C, SUITE C112 • LAS VEGAS, NV 89106 • (702) 454-2600 • FAX (702) 454-2026  
NEW YORK • 230 5TH AVE, SUITE 1305 • NEW YORK, NY 10016 • (212) 545-1030

HIGH POINT • INTERNATIONAL HOME FURNISHINGS CENTER (IHFC) • 210 E. COMMERCE AVE., INTERHALL: IH-101 • HIGH POINT, NC 27260 • (336) 841-6900  
SWITZERLAND: NOURISON EUROPE • FREILAGERSTR. 39 • 8047 ZURICH • SWITZERLAND • (+41) 044 401 45 46/47 • FAX: (+41) 044 401 45 48

[WWW.CALVINKLEINRUGS.COM](http://WWW.CALVINKLEINRUGS.COM)

RUGS SHOWN ARE OF SPECIFIC SIZE. DESIGN DETAILS WILL VARY WITH SIZE CHANGES.

CALVIN KLEIN RUG COLLECTION IS MANUFACTURED EXCLUSIVELY BY

*Nourison*<sup>™</sup>